

Quartet No. 14 in Eb Major
Op. 9, No. 2

CELLO

Franz Joseph Haydn

Allegro moderato.

2.

A

B

C

D

E

Menuetto.

First staff of the Menuetto section. It begins with a treble clef, a key signature of two flats (B-flat and E-flat), and a 3/4 time signature. The music starts with a piano (*p*) dynamic and features a series of eighth-note chords. A *cresc.* (crescendo) marking is present, leading to a fortissimo (*f*) dynamic at the end of the staff.

Second staff of the Menuetto section, continuing the eighth-note chord pattern from the first staff. It also begins with a piano (*p*) dynamic and includes a *cresc.* marking leading to a fortissimo (*f*) dynamic.

Trio.

First staff of the Trio section. It features a treble clef, a key signature of two flats, and a 3/4 time signature. The music starts with a piano (*p*) dynamic and includes first and second endings marked with '1' and '2'. A fortissimo (*f*) dynamic is used in the first ending, and the section concludes with a piano (*p*) dynamic.

Second staff of the Trio section, continuing the melodic line with first and second endings marked with '3' and 'v'. It concludes with a piano (*p*) dynamic.

Menuetto D. C.

Adagio.

Adagio section. It features a treble clef, a key signature of two flats, and a common time signature. The tempo is marked *Adagio*. The music is written in a *messa voce* style, characterized by a slow, expressive melody.

Cantabile.

First staff of the Cantabile section. It features a treble clef, a key signature of two flats, and a 3/4 time signature. The music begins with a piano (*p*) dynamic and consists of a flowing eighth-note melody.

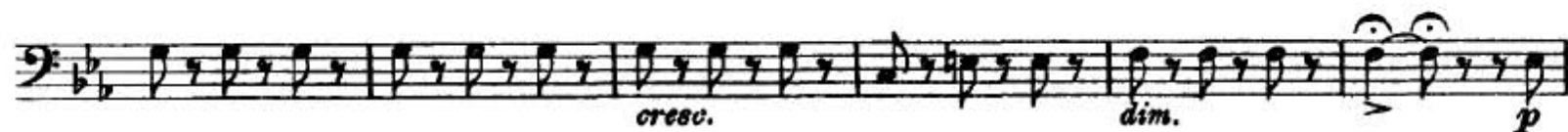
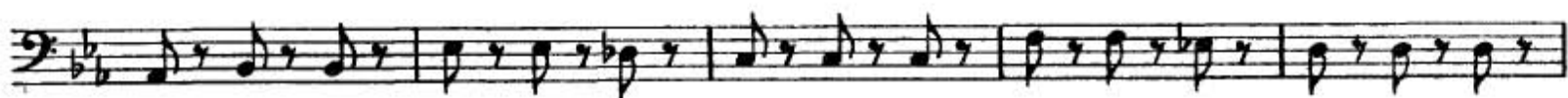
Second staff of the Cantabile section, continuing the eighth-note melody.

Third staff of the Cantabile section, featuring a *cresc.* marking and a piano (*p*) dynamic at the end of the staff.

Fourth staff of the Cantabile section, marked with a first ending 'A' and a piano (*p*) dynamic.

Fifth staff of the Cantabile section, continuing the eighth-note melody.

Sixth staff of the Cantabile section, concluding with a *cresc.* marking and a piano (*p*) dynamic. A *Viol. I.* marking is visible above the staff.



Allegro molto.

