

相思无药医

1 = C $\frac{4}{4}$

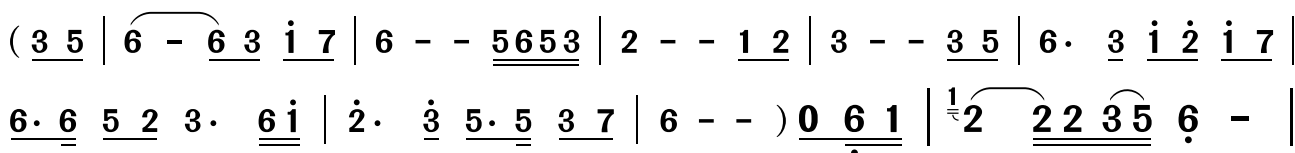
(根据金钰儿演唱音频记谱)

雷章俊词

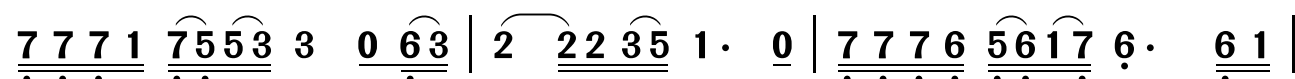
凡间精灵曲

岭南印象制谱

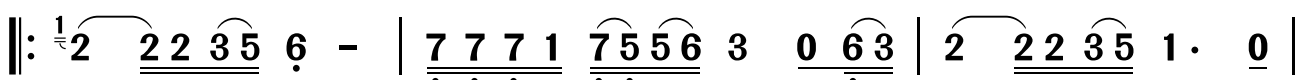
♩ = 56



溪桥外柳依依，



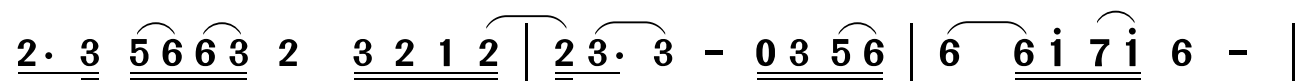
桃花朵朵绽春思，飞燕啄春泥，一缕柔情绕芳枝。1.2.卷珠



帘说心事，根并荷花一味痴，相逢应有时，



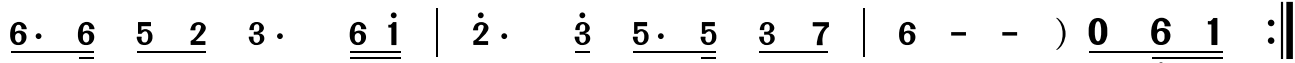
南塘莲子谁与寄。红颜易瘦翠眉低，窗前梅花挂银枝，冰雪



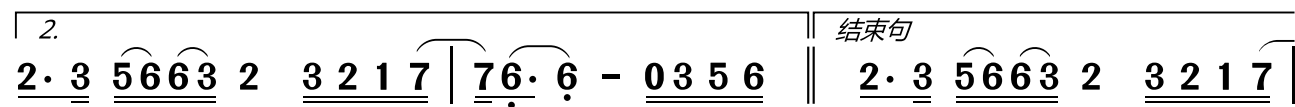
盈盈照玉肌，却无春消息。铺素笺吟新词，



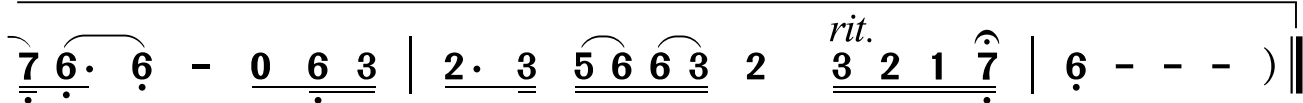
轻挽罗袖写相思，寄问郎君知不知，相思无药医。



2.卷珠



郎君知不知，相思无药医。 红颜易 D.S. 郎君知不知，相思无药



医。 寄问郎君知不知，相思无药医。