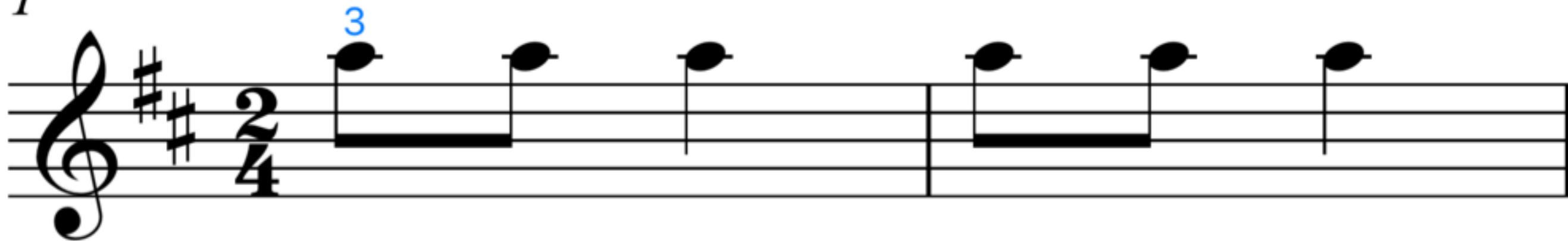


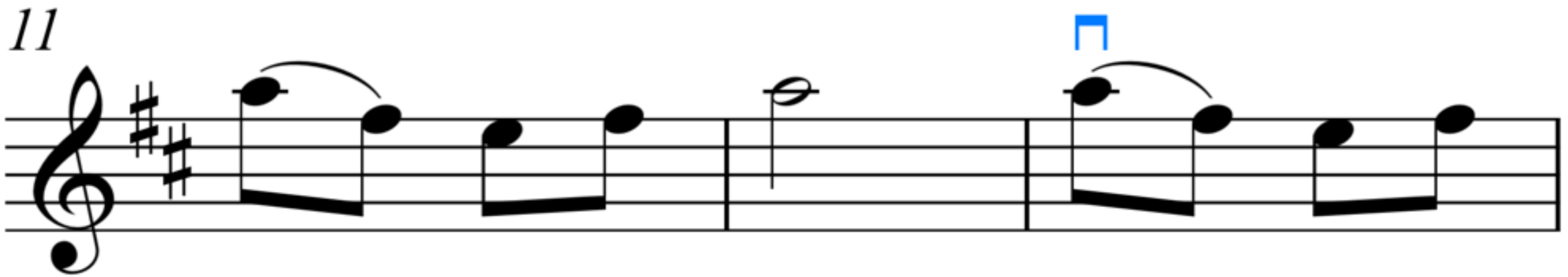
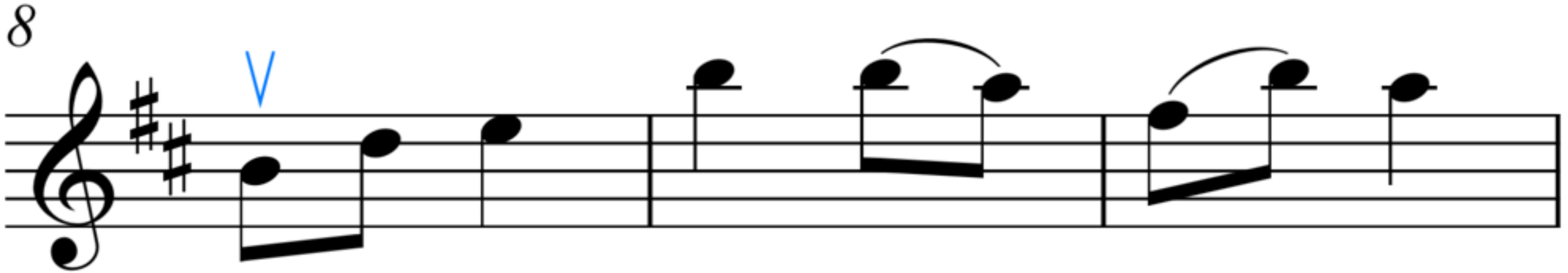
$\text{♩} = 106$ 天真地

1



3





14

rit.

The image shows a single musical staff in treble clef with a key signature of two sharps (F# and C#). The measure number '14' is written at the beginning. The notation consists of a sequence of notes: a quarter note on G4 (marked with a blue 'v'), followed by a quarter note on A4, a quarter note on B4, and a quarter note on C5. The next measure contains a quarter note on B4, a quarter note on A4, and a quarter note on G4. The third measure contains a quarter note on F#4, a quarter note on G4, and a quarter note on A4. The fourth measure contains a quarter note on B4, a quarter note on C5, and a quarter note on B4. The fifth measure contains a quarter note on A4, a quarter note on G4, and a quarter note on F#4. The sixth measure contains a quarter note on E4, a quarter note on D4, and a quarter note on C4. The piece concludes with a double bar line.