

# Allegretto (♩ = 66)

1

O.H. Sp. M. Sp. M.

*mf*

3

5



7



9



11



13



15



16

Musical notation for measures 16 and 17. The key signature is one sharp (F#). Measure 16 contains a quarter note G4, an eighth note pair (A4, B4), a quarter note C#5, and a quarter note D5. Measure 17 contains a quarter note E5, an eighth note pair (F#5, G5), a quarter note A5, and a quarter note B5. Fingering numbers 4 and 0 are shown above the notes in measure 17.

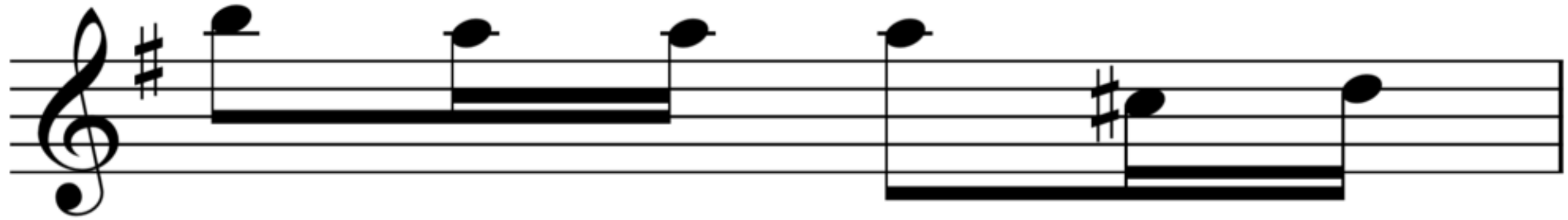
18

Musical notation for measures 18 and 19. The key signature is one sharp (F#). Measure 18 contains quarter notes G4, A4, B4, C#5, D5, and E5. Measure 19 contains a quarter note F#5, an eighth note pair (G5, A5), a quarter note B5, and a quarter note C#6. A fingering number 0 is shown above the note in measure 19.

20

Musical notation for measures 20 and 21. The key signature is one sharp (F#). Measure 20 contains quarter notes G4, A4, B4, C#5, and D5. Measure 21 contains a quarter note E5, an eighth note pair (F#5, G5), a quarter note A5, and a quarter note B5.

22



23



24



25



27



29



31



33



35



37



39



41

