

♩ = 126 向往地

1

The first staff of music is written in treble clef with a key signature of one sharp (F#) and a 2/4 time signature. It begins with a blue 'v' marking above the first measure. The melody consists of the following notes: a quarter note G4, a quarter note A4, a dotted quarter note B4, an eighth note C5, a quarter note D5, a quarter note E5, a quarter note F#5, and a quarter note G5. There are slurs over the first two notes and the last two notes.

4

The fourth staff of music continues the melody from the first staff. It begins with a dotted quarter note B4, an eighth note C5, a quarter note D5, a quarter note E5, a quarter note F#5, a quarter note G5, a quarter note A5, and a quarter note B5. There is a slur over the notes D5 and E5.

7



10



13



15



18



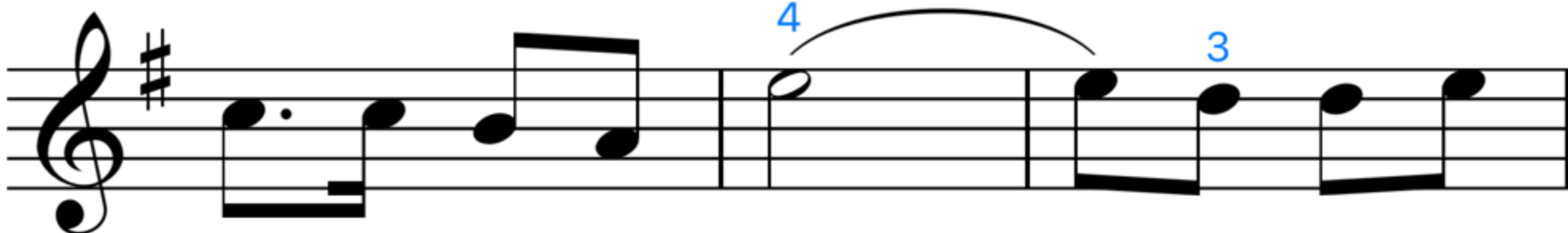
21



24



27



30



33

