

水调歌头·明月几时有

【宋】苏轼词
陆在易曲

Moderato 舒缓、歌唱地
dolce

mf *mp*

This system contains the first four measures of the piece. The music is in 4/4 time and B-flat major. The right hand features a melodic line with a dotted quarter note followed by an eighth note, and the left hand provides a steady accompaniment of eighth notes. Dynamics range from mezzo-forte (mf) to mezzo-piano (mp).

5

mf *dim.*

This system contains measures 5 through 8. The melodic line continues with a similar rhythmic pattern. A dynamic marking of *dim.* (diminuendo) is placed over the final measure of the system.

poco rit.

9

p *a tempo* *mp*

This system contains measures 9 through 13. The tempo is marked *poco rit.* (ritardando) and the dynamics include *p* (piano) and *mp* (mezzo-piano). The music concludes with a fermata over the final note.

14

明月几时有 把酒问青天

This system contains measures 14 through 17. It includes the vocal line with the lyrics '明月几时有 把酒问青天' (Ming Yue Ji Shi You Ba Jiu Wen Qing Tian). The piano accompaniment continues with a similar rhythmic pattern.

18

不知天上宫阙今夕是何年

22

我欲乘风归去又恐琼楼玉宇

mp

m. d.

m. d.

25

高处不胜寒起舞弄清影何似在人

mf

dim.

m. d.

间 *più mosse*

mf

33

f cresc. mf dim.

37

转 朱阁 低绮 户 照 无眠

mp

41

照 无眠 不应 有恨 何事 偏向 偏向 别 时

mp

憧憬、幻想地

45

mp

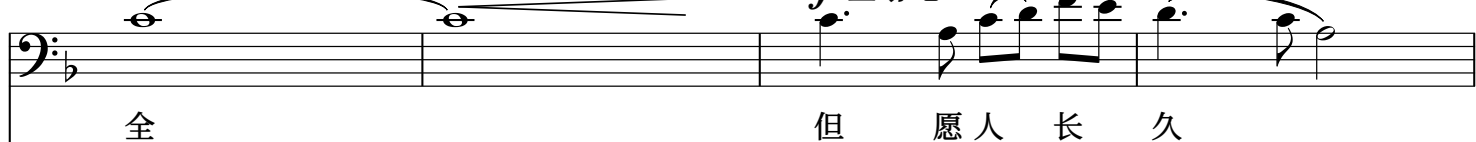
mf

49

*mf**mp*

mf

53

*cresc.**mf* 企盼地

mp cresc. *mf*

