

# 渭水秋歌

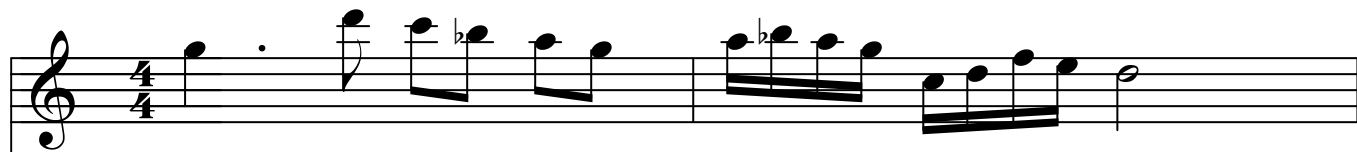
笛子独奏：李晓舟

作曲：王相见

打谱：三毛制谱

1=C  $\frac{4}{4}$

♩ = 48



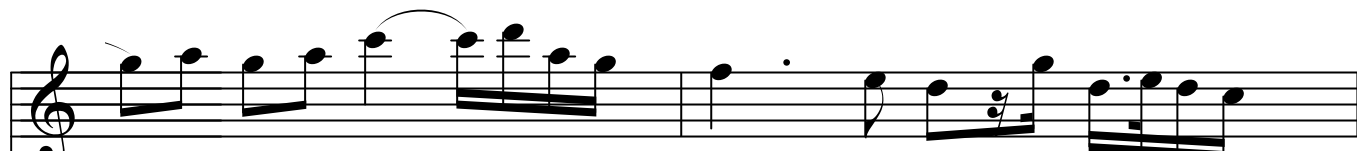
1=C  $\frac{4}{4}$  5 . 2̇ 1̇ b7 6 5 | 6 b7 6 5 1 2 4 3 2 - |



5 5 2̇ 1̇ b7 1̇ 6 5 | 6 b7 6 5 2 4 3 2 1 - |



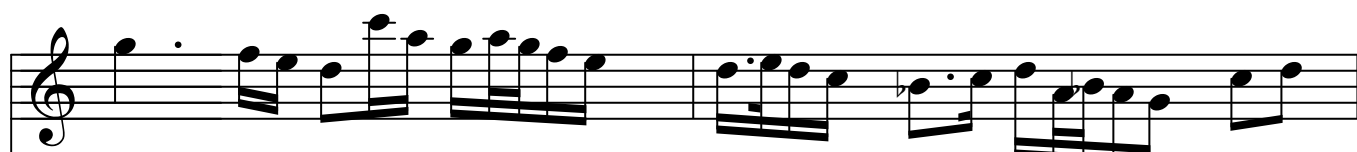
2 3 2 1 b7 . 5 7 5 7 1 2 | 5 b7 6 5 4 4 5 6 2 4 5 |



5 6 5 6 1̇ 1̇ 2̇ 6 5 | 4 . 3 2 0 5 2 . 3 2 1 |



2 5 b7 1 2 1̇ 6 5 . 6 4 3 | 2 . 3 1 2 b7 . 1 6 5 1 2 |



5 . 4 3 2 1̇ 6 5 6 5 4 3 | 2 . 3 2 1 b7 . 1 2 6 7 6 5 1 2 |

5 - 0 0 | 2̇ . 1̇ 7̇ 6 . 5 |

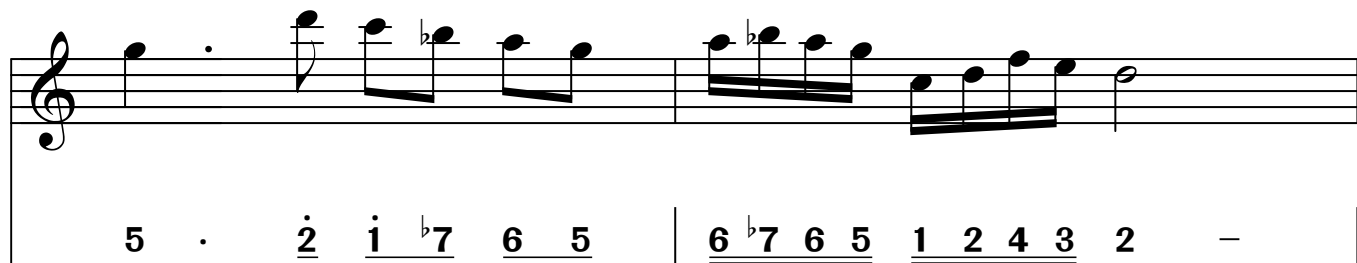
1̇ 2̇ 3̇ 2̇ 1̇ 7̇ 6 5 - | 2̇ . 1̇ 2̇ 4 2 4 5 |

1̇ 7̇ 6 5 1 2 4 3 2 - | 5 . 3 2 1 7̇ . 5̇ 7̇ 5̇ 7̇ 1 2 . 5 6 |

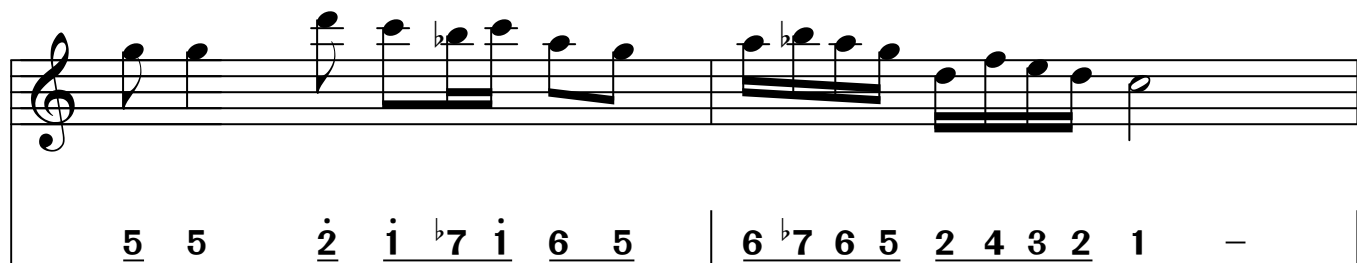
1̇ . 7̇ 6 5 4 4 5 6 2 4 5 | 5 6 5 6 1̇ . 2̇ 5 4 3 |

2̇ - 1̇ . 2̇ 1̇ 2̇ 5 6 4 3 | 2̇ - 1̇ . 2̇ 5 4 3 |

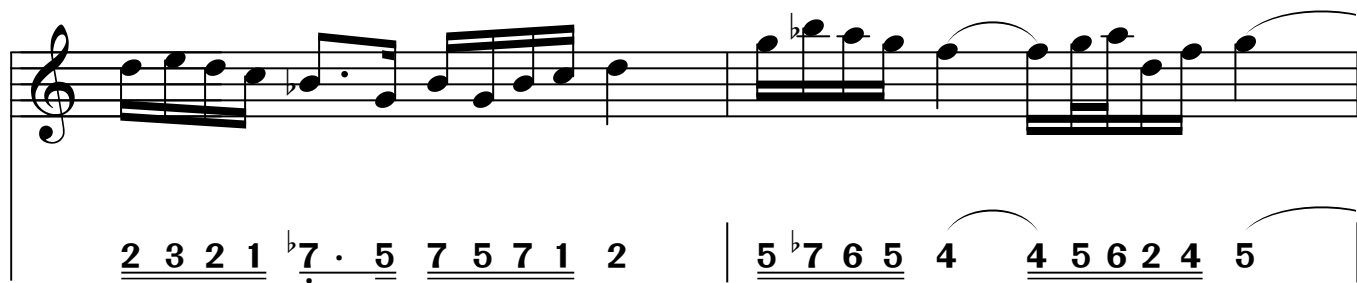
2̇ . 3̇ 2̇ 1̇ 7̇ . 1̇ 6 5 1̇ 2̇ | 5 - - 0 |



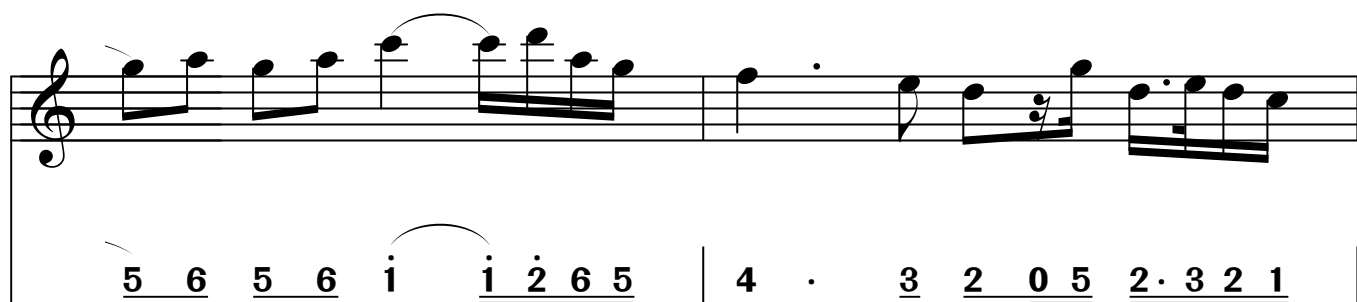
5 . 2̇ i̇ b7 6 5 | 6̇ b7 6 5 1 2 4 3 2 -



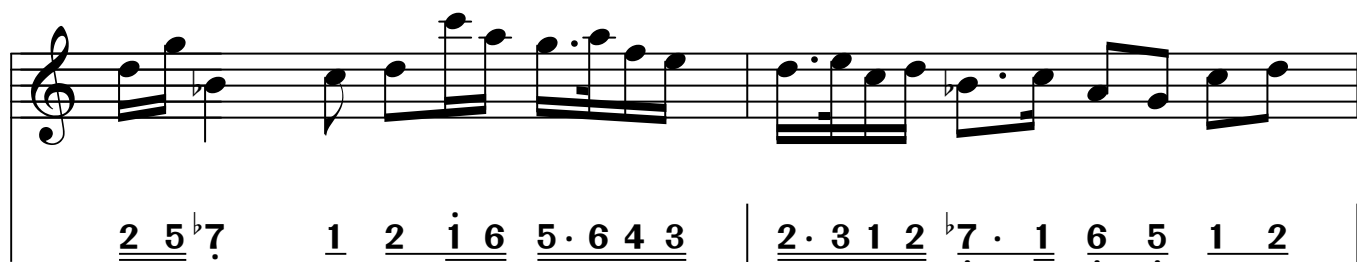
5 5 2̇ i̇ b7 i̇ 6 5 | 6̇ b7 6 5 2 4 3 2 1 -



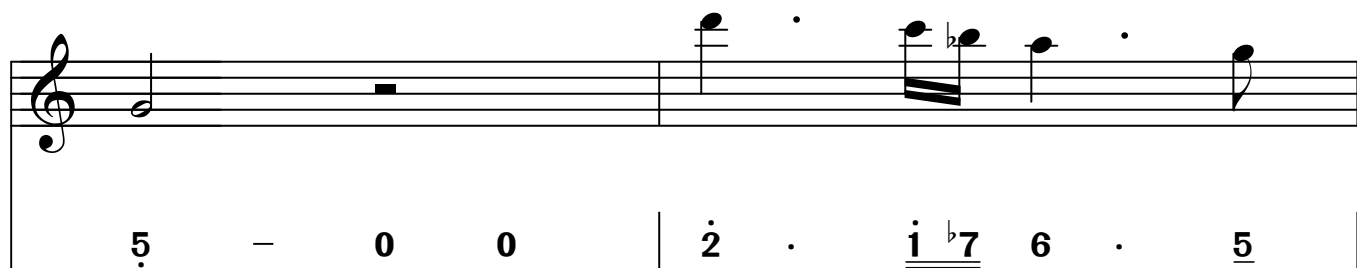
2 3 2 1 b7 . 5 7 5 7 1 2 | 5 b7 6 5 4 4 5 6 2 4 5



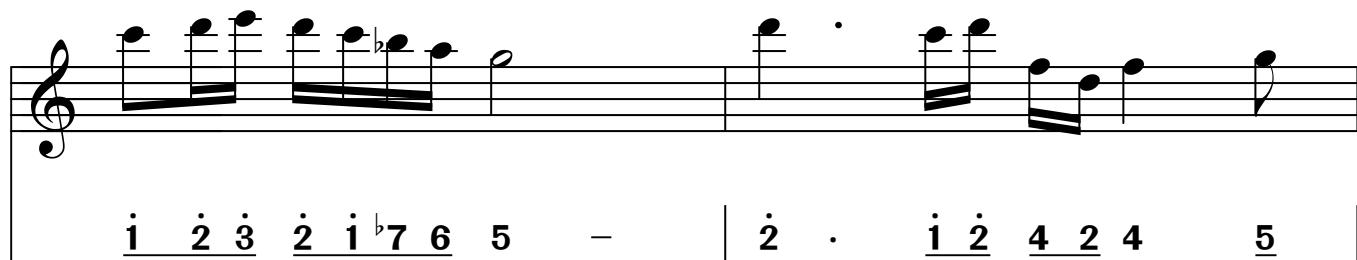
5 6 5 6 i̇ i̇ 2̇ 6 5 | 4 . 3 2 0 5 2 . 3 2 1

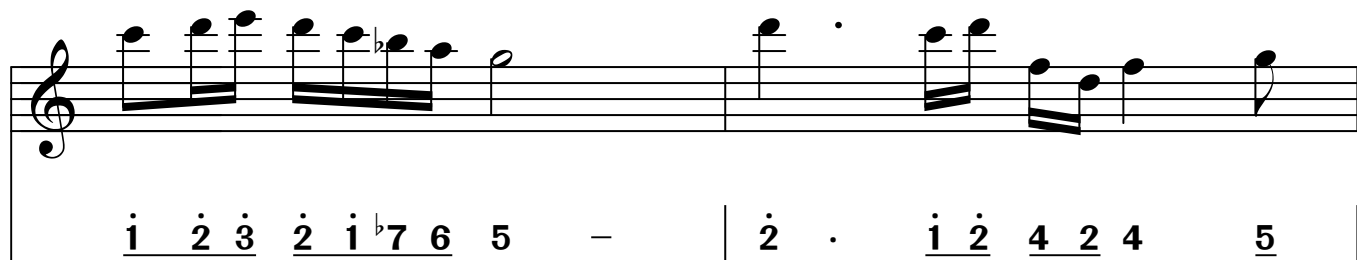


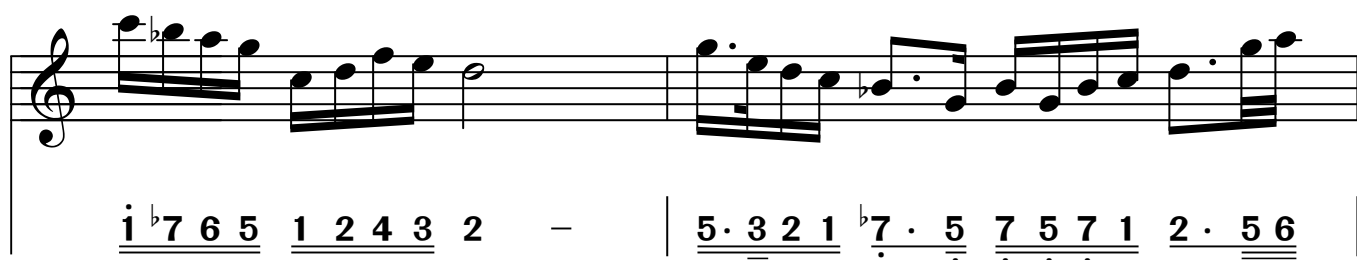
2 5 b7 1 2 i̇ 6 5 . 6 4 3 | 2 . 3 1 2 b7 . 1 6 5 1 2

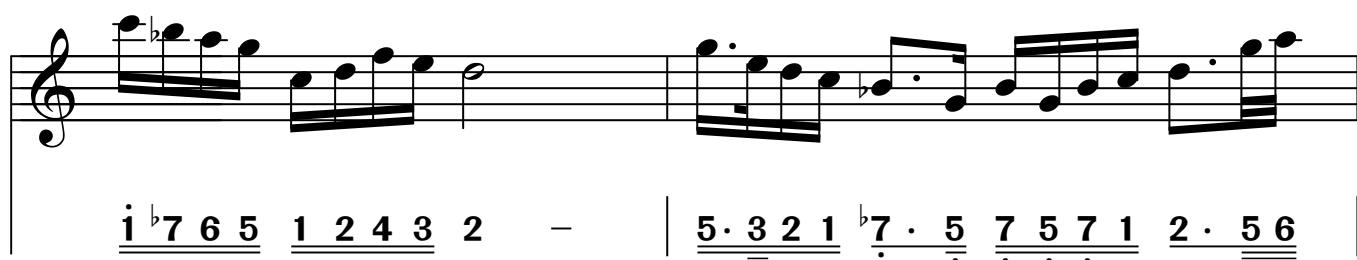


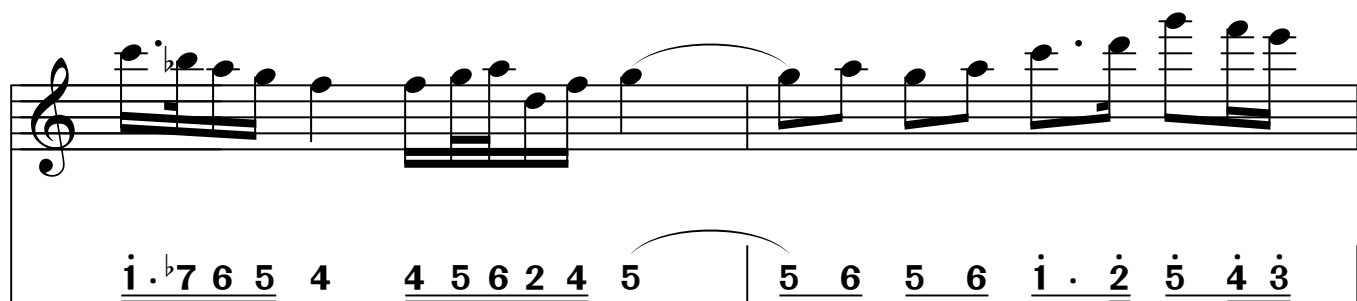
5 - 0 0 | 2̇ . i̇ b7 6 . 5

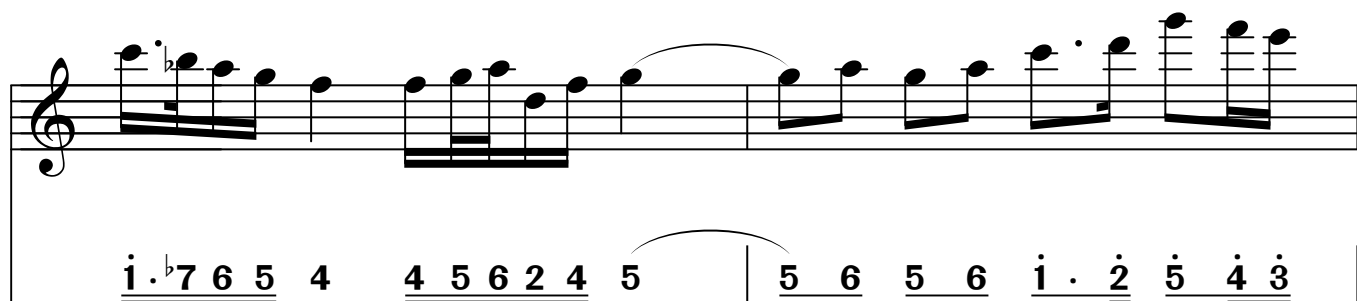


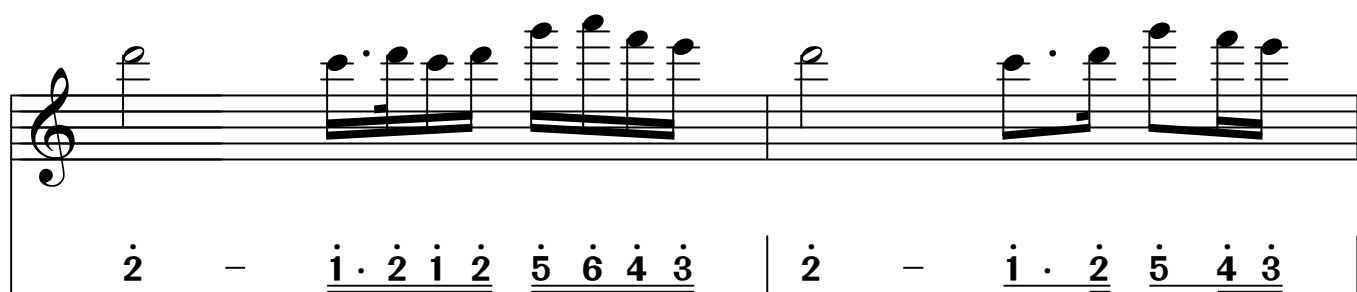


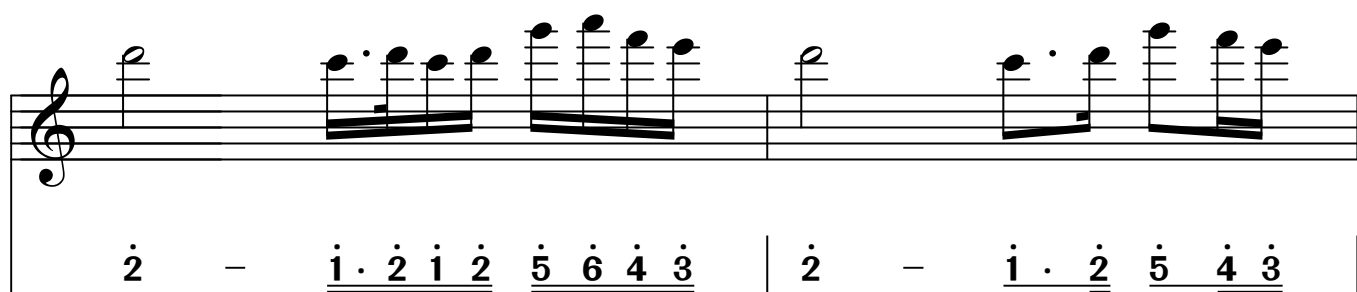


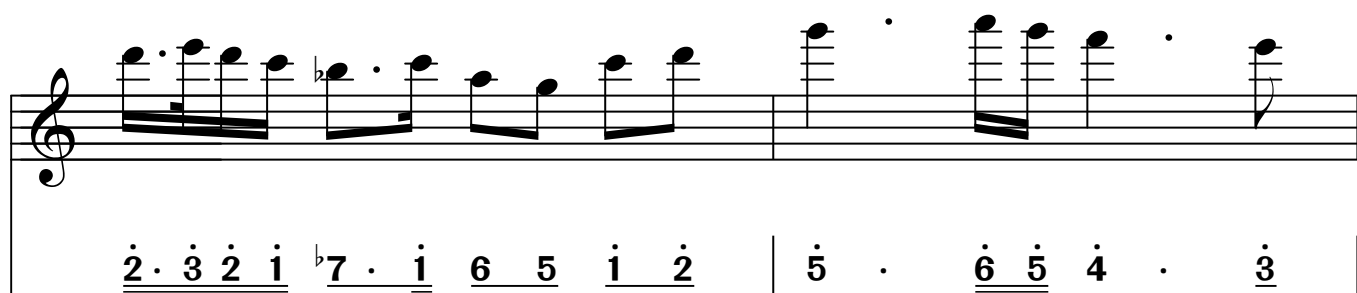


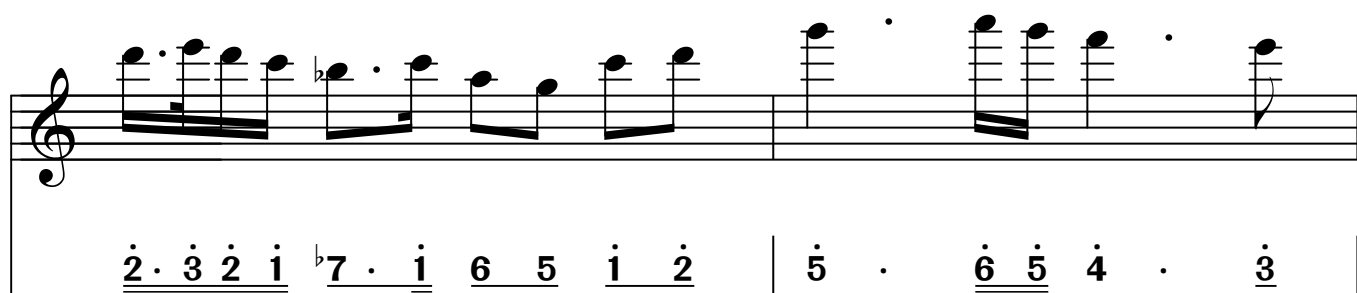


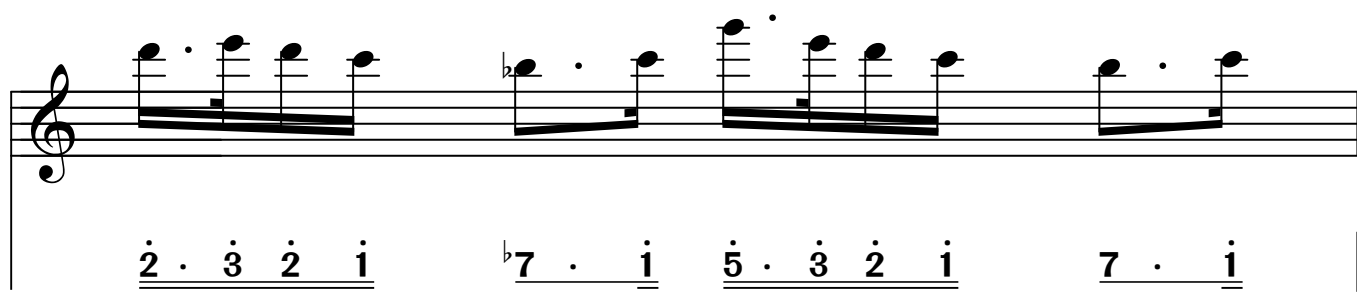


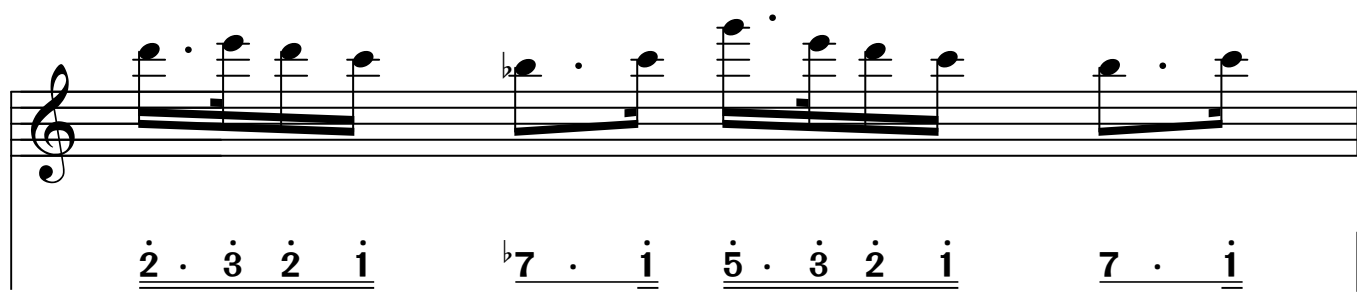












Musical staff with notes:  $\dot{2}$ ,  $\underline{\underline{6}}$ ,  $\underline{\underline{b7}}$ ,  $\underline{\underline{6}}$ ,  $\underline{\underline{5}}$ ,  $4$ ,  $\cdot$ ,  $\underline{\underline{5}}$ ,  $\dot{1}$ ,  $\underline{\underline{5}}$ ,  $\underline{\underline{6}}$ ,  $\underline{\underline{4}}$ ,  $\underline{\underline{3}}$ ,  $\underline{\underline{2}}$ ,  $\underline{\underline{0}}$ ,  $\underline{\underline{3}}$

Musical staff with notes:  $\underline{\underline{2}}$ ,  $\underline{\underline{\cdot 3}}$ ,  $\underline{\underline{2}}$ ,  $\underline{\underline{1}}$ ,  $\underline{\underline{b7}}$ ,  $\underline{\underline{6}}$ ,  $\underline{\underline{5}}$ ,  $1$ ,  $\cdot$ ,  $\underline{\underline{2}}$  |  $\underline{\underline{6}}$ ,  $\underline{\underline{b7}}$ ,  $\underline{\underline{6}}$ ,  $\underline{\underline{5}}$ ,  $\underline{\underline{4}}$ ,  $\underline{\underline{3}}$ ,  $\underline{\underline{2}}$ ,  $\underline{\underline{4}}$ ,  $\underline{\underline{4}}$  -

Musical staff with notes:  $5$  - - - ||