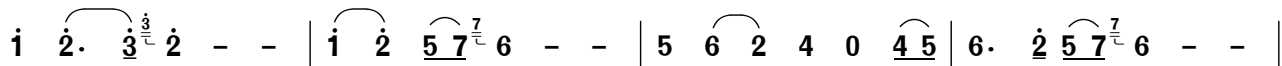


# 半月情

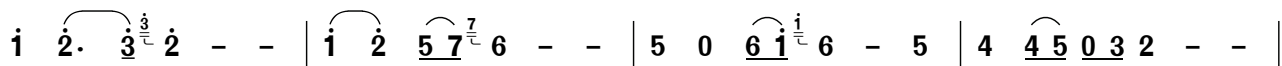
孙 华 词  
颂 今 曲

1=C(G)  $\frac{6}{4}$

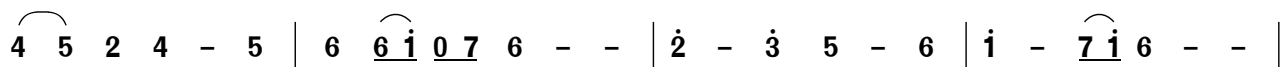
$\text{♩}=108$  柔中带刚地



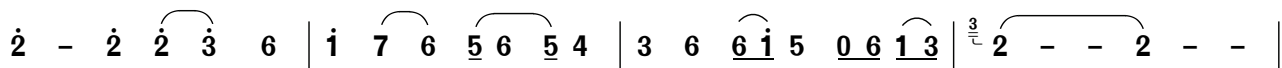
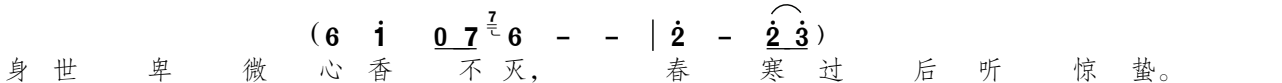
情如月，爱如月，几多阴晴，几多圆缺。  
命如月，运如月，几多顺舛，几多盈缺。



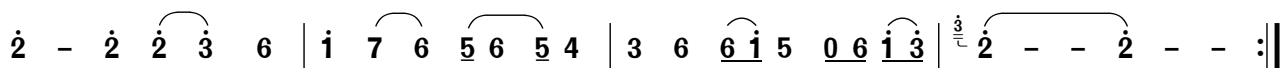
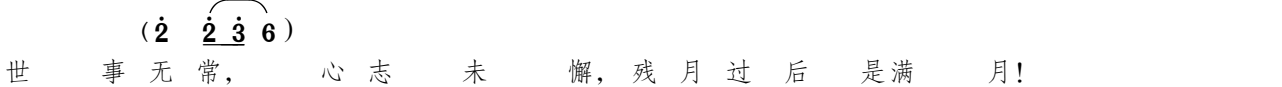
爱如月，情如月，几回信断，几回音绝。  
运如月，命如月，几回花开，几回花谢。



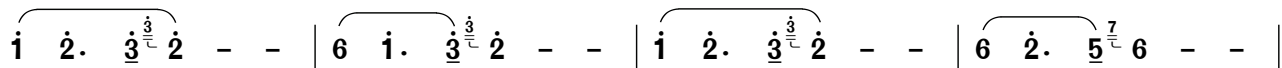
两小无猜柔肠百结，天各一方伤离别。



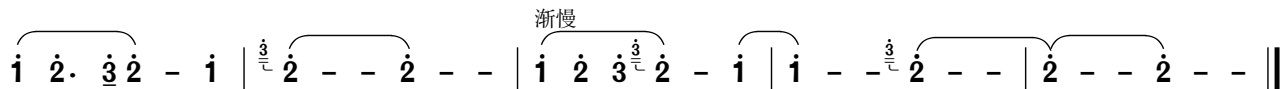
世态炎凉，一腔碧血，暗夜里心似明月！



世态炎凉，一腔碧血，暗夜里心似明月！



啊！半月，啊！半月，



啊！半月，啊！半月。